

A woman with short dark hair, wearing a patterned top, is smiling and looking to her left. She is standing in front of a red fabric with a white polka-dot pattern. Above her, a blue fabric and an orange fabric with a white geometric pattern are hanging on a line. The background is a blurred outdoor setting with greenery and other people.

Global
Mamas 2015

**Global Mama of the Year:
Martha Rhule, Batiker
Designer of “Pebbles” Batik**



Girls' Headband

Wide center. Tapered sides.
Covered elastic back. Elastic
portion is 8"L. Headband is
10"L x 2"W at center.
100% cotton.

Girls One Size Fits Most

Plain Assorted: 15410001

Bow Assorted: 15413001



Shirt Dress

Shirt collar. Button front.
Cap sleeves. Gathered skirt.
Tie belt. 100% cotton.

Girls 2, 4, 6, 8

Diamonds-Lavender: 1501801

Dots-Aqua: 1501802

Splash-Primrose: 1501803



Gypsy Dress

BABIES - Sleeveless.

Two panel gathered skirt.
100% cotton.

GIRLS - Halter neck. Tie straps
at back. Empire waist. Four
panel gathered skirt.
100% Cotton.

Babies 6m, 12m, 18m, 24m

Patchwork-Primrose: 1001407
Patchwork-Violet: 1001406

Girls 2, 4, 6, 8

Patchwork-Primrose: 1501407
Patchwork-Violet: 1501406



Babies'
Style



Girls'
Style

Sundress

Sleeveless. Gathered skirt.
Empire waist. Button
closure. 100% cotton.

Babies 6m, 12m, 18m, 24m

Paisley-Violet: 1001014
Pineapple-Marigold: 1001017
Cupcakes-Aqua: 1001015
Dots-Primrose: 1001019

Girls 2, 4, 6, 8

Paisley-Violet: 1501014
Pineapple-Marigold: 1501017
Cupcakes-Aqua: 1501015
Dots-Primrose: 1501019





Eli Dress

Sleeveless. A-line shape. Cowl neck. Contrasting patch pockets and hem band. Decorative contrast stitching. 100% cotton.

Girls 2, 4, 6, 8

Pebbles-Papaya: 1501608

Paisley-Aqua: 1501607



Pocket Dress

Adjustable tie straps. Contrast yoke and ruffle. Two front patch pockets. 100% cotton.

Babies 6m, 12m, 18m, 24m

Paisley-Violet: 1001306

Daisy Star-Papaya: 1001307

Girls 2, 4, 6

Paisley-Violet: 1501306

Daisy Star-Papaya: 1501307



Romper

Halter neck. Pleating detail at neckline. Elastic waist and upper-back. Gathered shorts with banded bottom. 100% cotton.

Girls 2, 4, 6

Pebbles-Papaya: 1501704

Ivy-Aqua: 1501703



Reversible Dress

Sleeveless. A-line shape.
100% cotton.

Babies 12m, 18m, 24m

Hearts-Purple: 1001116

Ivy-Shamrock: 1001115

Giant Flower-Teal: 1001114

Starflower-Pink: 1001112

Elephants-Blue: 1001104

Girls 2, 4, 6, 8

Hearts-Purple: 1501116

Ivy-Shamrock:1501115

Giant Flower-Teal: 1501114

Starflower-Pink: 1501112

Elephants-Blue: 1501104



Button Down Shirt

Button front. Dress collar. Faced placket for babies. Topstitched placket for boys. Front pocket. 100% cotton.

Babies 6m, 12m, 18m, 24m

Elephants-Blueberry: 1011009

Cars-Marigold: 1011013

Jungle Frog-Shamrock: 1011012

Robots-Teal: 1011011

Boys 2, 4, 6, 8

Elephants-Blueberry: 1511009

Cars-Marigold: 1511013

Jungle Frog-Shamrock: 1511012

Robots-Teal: 1511011



Kids' Cape

Neck band. Velcro closure. 100% cotton.

Kids One Size Fits Most

Daisy Star-Papaya: 15414041

Stars-Gold: 15414031

Night-Navy: 15414021



Sun Hat

Circle brim. Tie strap for babies. 100% cotton.

Babies One Size Fits Most (12m - 24m)

Diamonds-Teal: 10911201
Pebbles-Primrose: 10911211
Stars-Gold: 10911091
Sailing-Blue: 10911031
Ornaments-Lime: 10911061
Hearts-Purple: 10911221
Daisy Star-Papaya: 10911191

Kids One Size Fits Most (2 - 6)

Diamonds-Teal: 15411201
Pebbles-Primrose: 15411211
Stars-Gold: 15411091
Sailing-Blue: 15411031
Ornaments-Lime: 15411061
Hearts-Purple: 15411221
Daisy Star-Papaya: 15411191



Babies' Style (with ties)



Reversible Bib

Velcro closure. Recycled flour sack backing. 100% cotton.

Babies One Size Fits Most

Cars-Marigold: 10910161
School of Fish-Blue: 10910021
Silverware-Orange: 10910031
Daisy Star-Papaya: 10910131
Cupcakes-Aqua: 10910141
Stars-Gold: 10910081
Hearts-Purple: 10910151



Flour Sack Back

Crawling Shoes

Batik shell and lining. Padded with foam. Elastic around ankle. 100% cotton.

Babies One Size Fits Most (6m-12m)

Pebbles-Primrose: 10913131
Stars-Gold: 10913071
Sailing-Blue: 10913041
Paisley-Violet: 10913111
Ornaments-Lime: 10913031
Daisy Star-Papaya: 10913121





Party Dress

Fitted at bust and waist. Scoop neckline. Key-hole with button closure at back neck. Gathered skirt. Solid hem band. Knee length. 100% cotton.

Women S, M, L, XL

Diamonds-Blueberry: 2000607

Splash-Marigold: 2000610

Dots-Primrose: 2000609

Diamonds-Silver: 2000608



Retro Dress

Fitted bodice. V-neck. Band collar. Cap sleeves. Side zip. Tie belt. Tuck details at waist. Knee length. 100% cotton.

Women S, M, L, XL

Marrakech-Shamrock: 2000018
Small Fisheye-Marigold: 2000017
Splash-Black: 2000019
Diamonds-Teal: 2000016



Patchwork Wallet on pg. 26

Emi Dress

Fitted bodice. Natural fit skirt. Crossover front. Sleeveless, gathered at shoulder. Empire waist band. Side zip. Knee length. 100% cotton.

Women S, M, L, XL

Paisley-Primrose: 20003091
Roses-Black: 2000312
Pebbles-Silver: 2000310
Splash-Blueberry: 2000311





Globe Trotter Bag on pg. 23

A-Line Dress

Easy fit. Boat neck.
Sleeveless. Side darts.
Above knee length.
100% cotton.

Women S, M, L, XL

Ivy-Aqua: 2000212
Mosaic-Black: 2001501
Fisheye-Olive: 2000201
Damask-Lavender: 2000210



Wrap Dress

Natural fit. Adjustable wrap front. Wide waistband ties at side. Inside wrap tie closure. Above elbow length sleeve with cuff. Full skirt. Knee length. 100% cotton.

Women S, M, L, XL

Dots-Black: 2000113
Giraffe-Silver: 2000111
Splash-Aqua: 2000112



Shirt Dress

Easy fit. Shirt collar. Button front. Tagua nut buttons. Cap sleeves. Patch pockets at bust. Back darts. Tie belt. Knee length. 100% cotton.

Women S, M, L, XL

Small Fisheye-Olive: 20014041

Hydrangea-Slate: 20014031

Diamonds-Lavender: 20014021



Eli Dress

Relaxed a-line shape. Structured cowl neck. Racer back. Princess seams. Inset pockets. Wide skirt hem band. Decorative, contrast stitching. Above knee length. 100% cotton.

Women S, M, L, XL

Shells-Blueberry: 2000711

Roses-Papaya: 2000710

Eyelet-Aqua: 2000709





Peplum Blouse

Fitted to waist. Flared peplum.
Scoop neck. Sleeveless.
Gathered bust detail.
Wide shaped waistband. Side
closure with covered buttons.
100% cotton.

Women S, M, L, XL

Ivy-Aqua: 2030508

Diamonds-Lavender: 2030507

Splash-Marigold: 2030509



Retro Blouse

Fitted body. Y-neck.
Band collar. Cap sleeves.
Button front. Tagua nut buttons.
100% cotton.

Women S, M, L, XL

Giraffe-Silver: 2030014

Diamonds-Blueberry: 2030013

Fisheye-Primrose: 2030016



Wrap Blouse

Natural fit. Adjustable wrap
front. Cap Sleeves. Wide
waistband ties at side. Inside
wrap tie closure. Flared peplum.
100% cotton.

Women S, M, L, XL

Splash-Blueberry: 2030702

Pebbles-Silver: 2030701





Jacket

Natural fit. Shirt collar. Button front. Overlapping button cuffs. Tagua nut buttons. Tie belt. Recycled flour sack lining. 100% cotton.

Women S, M, L, XL

Giraffe-Silver: 2040203

Dots-Aqua: 2040201

Small Fisheye-Primrose: 2040202



Tagua Nut Buttons

To produce our Tagua nut buttons Global Mamas is proud to partner with Sapia, a fair trade artisan group from Bogotá, Columbia.



Wrap Skirt

Natural fit. Adjustable wrap waistband. Wide waistband ties. Full skirt. Above knee length. 100% cotton.

Women S, M, L, XL

Cat's Eye-Slate: 2010801
Diamonds-Lavender: 2010802
Giant Flower-Blueberry: 2010803



Fiesta Skirt

Easy fit. Full cut. Elastic gathered waist. Gathered panels. Above knee length. 100% cotton.

Women S, M, L, XL

Patchwork-Silver: 2010006
Patchwork-Black: 2010008



Panel Skirt

Natural fit. Back zip. A-line skirt. Above knee length. 100% cotton.

Women XS, S, M, L, XL

Giant Flower-Teal: 2010208
Diamonds-Silver: 2010207
Leaves-Slate: 2010209



Pleated Skirt

Fitted at natural waist. Pleated waist. Belt loops along waistband. Deep side pockets. Invisible back zipper. Hook and eye closure. Knee length. 100% cotton.

Women S, M, L, XL

Roses-Shamrock: 2010309
Roses-Marigold: 2010308



Pencil Skirt

Fitted at natural waist. Invisible back zipper. Hook and bar closure. Knee length. 100% cotton.

Women S, M, L, XL

Diamonds-Khaki: 2010901
Dots-Blueberry: 2010902



Pocket Skirt

Natural fit. Wide reinforced waistband. Full cut. Deep front patch pockets with top band. Invisible back zipper. Above knee length. 100% cotton.

Women S, M, L, XL

Giraffe-Silver: 2010111
Diamonds-Blueberry: 2010110
Polka Dots-Black: 2010109



men

Slim Fit Shirt

Tailored fit. Dress collar.
Button front. Front pocket.
Side slits. 100% cotton.

Men S, M, L, XL

Diamonds-Khaki: 2501105
Pineapple-Marigold: 2501106
Eyelet-Blueberry: 2501104



Boxers

Natural fit. Elastic waistband.
Front fly placket with button
closure. 100% cotton.

Men S, M, L, XL

Pineapple-Marigold: 2511009
Eyelet-Blueberry: 2511007
Diamonds-Khaki: 2511008



Tie

60" long. 100% cotton.

Men One Size Fits Most

Jungle-Blueberry: 25911211

Giraffe-Silver: 25911201

Diamonds-Khaki: 25911191

Cat's Eye-Green: 25911181

Splash-Marigold: 25911221

Cityscape-Navy: 25911011



Button Down Shirt

Relaxed fit. Dress collar. Button

front. Front pocket.

Side slits. 100% cotton.

Men S, M, L, XL

Cat's Eye-Green: 2501010

Giraffe-Silver: 2501011

Jungle-Blueberry: 2501012





Sarong

Approximately 68"W x 42"L.
100% cotton.

One Size Fits Most

Ivy-Aqua: 20900181

Pineapple-Marigold: 20900201

Jungle-Blueberry: 20900191

Palms-Brown: 2090071

Giant Flower-Teal: 20900171

Diamonds-Khaki: 20900161

Box Turtle-Blue: 20900021

Sunflower-Red: 20900011



Headband

Wide center. Tapered sides.
Covered elastic back. Elastic
portion is 5"L. Headband is
15"L x 2.75"W at center.
100% cotton.

One Size Fits Most

Assorted: 20901001



Twist Headband

Interlocking twist detail at
center. Covered elastic back.
Elastic portion is 3"L.
Headband is 15"L x 3"W at
center. 100% cotton.

Assorted: 20904001

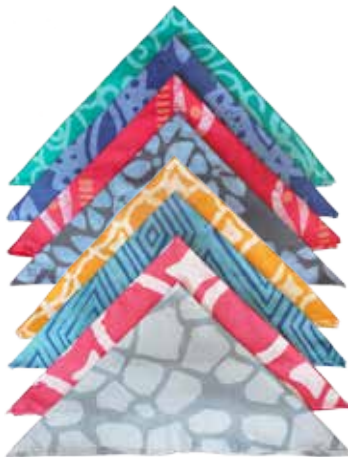


Bandana

20" x 20". 100% cotton.

One Size Fits Most

Assorted: 25910001



Infinity Scarf

60" circumference x 12"W.
Circular scarf (shown wrapped
twice). 100% cotton.

Assorted: 20905001



Clutch Purse

Pleated front. Snap closure. Six inside card pockets. One inside large open pocket. One inside large zip pocket.

4.5"H x 7.5"W closed.

100% cotton.

Polka Dots-Black: 30202020

Diamonds-Teal: 30202190

Splash-Marigold: 30202230

Pebbles-Primrose: 30202210

Giraffe-Silver: 30202200

Splash-Blueberry: 30202220



Satchel

Top zip. Outside pocket.

Reinforced, quilted bottom.

Reinforced handles and straps.

6" tote handle drop.

21" shoulder strap drop.

12.5"H x 17"W x 2.5"D.

Recycled flour sack lining.

100% cotton.

Ivy-Aqua: 30409130

Fisheye-Primrose: 30409120

Diamonds-Khaki: 30409110





Pleated Skirt on pg. 15

Twist Clutch

Top zip. Front interlocking twist detail. 6.5" long wristlet strap that tucks inside when not in use.
4.5"H x 8"W.
Recycled flour sack lining.
100% cotton.

Paisley-Primrose: 30204040
Diamonds-Khaki: 30204010
Ivy-Aqua: 30204030
Small Fisheye-Marigold: 30204060
Pebbles-Silver: 30204050
Dots-Blueberry: 30204020



Weekend Bag

Top Zip. Inside pocket. Reinforced, quilted bottom. Reinforced handles.
9" handle drop.
14"H x 20"W x 7"D.
Recycled flour sack lining.
100% cotton.

Diamonds-Blueberry: 30404110
Fisheye-Olive: 30404010
Ivy-Shamrock: 30404130
Dots-Primrose: 30404120



Basket Tote Bag

Reinforced to hold shape.
Inside pocket. Loop closure with
hand-made African bead "button".
6.25" handle drop.
13.75"H x 20.5"W x 7"D.
Poly-cotton lining.
100% cotton shell.

Giant Flower-Blueberry: 30408140
Pineapple-Marigold: 30408160
Diamonds-Khaki: 30408120
Eyelet-Aqua: 30408130
Roses-Papaya: 30408170
Giraffe-Silver: 30408150



Braided Handle Bag

Multicolor woven handle detail.
Tab closure with hand-made
African bead "button".
13" handle drop.
13.25"H x 16.5"W x 2.25"D.
Recycled flour sack lining.
100% cotton.

Pebbles-Papaya: 30411050
Ivy-Aqua: 30411020
Giraffe-Silver: 30411030
Jungle-Blueberry: 30411040



Braided Handle Detail



Fiesta Skirt on pg. 14

Globe Trotter

Top zip. Inside pocket.
22.5" handle drop.
13"H x 17.5"W x 6.5"D.
Recycled flour sack lining.
100% cotton.

Fisheye-Olive: 30308040

Flour Sack: 30308080

Diamonds-Teal: 30308030

Small Fisheye-Marigold: 30308070

Damask-Lavender: 30308020

Mosaic-Black: 30308050

Patchwork: 30308010



Batik Backpack

Drawstring closure. Flap cover.
Loop closure with hand-made
African bead "button". Top
handle. Two front zipper
pockets are 6.75"H x 5"W.
23.25" back straps.
14"H x 9.5"W x 6"D.
Recycled flour sack lining.
100% cotton.

Dots-Primrose: 30503020

Robots-Teal: 30503040

Diamonds-Lavender: 30503010

Eyelet-Blueberry: 30503030



Deborah's Bag

Set-in top zip closure.
Inside pocket.
9" handle drop.
12"H x 21"W x 5"D.
Recycled flour sack lining.
100% cotton.

Paisley-Primrose: 30412020
Diamonds-Blueberry: 30412010
Dots-Shamrock: 30412040
Small Fisheye-Marigold: 30412030



Minimalist

Flap cover. Loop closure with hand-made African bead "button". Inside partition.
23" handle drop.
6"H x 5.5"W x 2"D.
Recycled flour sack lining.
100% cotton.

Splash-Marigold: 30307040
Diamonds-Silver: 30307010
Ivy-Shamrock: 30307020
Paisley-Primrose: 30307030



Deborah Asmah, Cape Coast seamstress, designed the "Deborah Bag".



Drawstring Bag

Drawstring closure. Two shoulder cord straps.
16"H x 13"W.
Recycled flour sack lining.
100% cotton.

Assorted: 30501000



Travel Bag

Top zip. Outside zip pocket.
5.5"H x 9"W at top.
6.25"W x 3"D at base.
Recycled flour sack lining.
100% cotton.

Assorted:30109000



Minimizing Waste

Global Mamas designed these products that utilize even the smallest scraps as part of our efforts to achieve limited waste in production.

Patchwork Wallet

Made from recycled fabric scraps. Each one is unique. Zip top. Flap cover. Loop closure with hand-made African bead "button". 5.5" long wristlet strap that tucks inside when not in use. 4.5"H x 9"W. 100% cotton.

Patchwork Batik: 30201000



Zip Wristlet

Top zip. Front zip pocket. 5" long wristlet strap that tucks inside when not in use. 4.75"H x 7"W. Assorted batik lining. 100% cotton.

Assorted: 30205000



Urban Explorer Bag

Made from recycled fabric scraps. Each one is unique. Set-in top zip. Patchwork front with three overlapping pockets. Loop closures with hand-made African bead "buttons". Solid batik back. 23" handle drop. 12"H x 10.5"W x 1.5"D. 100% cotton.

Patchwork Batik: 30300000



Solid Batik Back

Pocket Wallet

Made from recycled fabric scraps. Each one is unique. Three card divider pockets inside. Velcro closure. 3"H x 4.5"W. 100% cotton.

Patchwork Batik: 30200000



Passport

Explorer Bag

Made from recycled fabric scraps. Each one is unique. Set-in top zip. Patchwork front with two overlapping pockets. Loop closure with hand-made African bead "buttons". Solid batik back. 30" handle drop. 7"H x 6"W x 1.5"D. 100% cotton.

Patchwork Batik: 30300100



Scrap Tote

Made from recycled fabric scraps. Each one is unique. Loop closure with hand-made African bead "button". 12.5" handle drop. 13.5"H x 14"W x 3"D. 100% cotton.

Patchwork Batik: 30400000



Globe Trotter

Made from recycled fabric scraps. Each one is unique. Top zip. Inside pocket. 22.5" handle drop. 13"H x 17.5"W x 6.5"D. Recycled flour sack lining. 100% cotton.

Patchwork Batik: 30308010



Flour Sack Basket Tote Bag

Two layers of recycled flour sacks. Reinforced to hold shape. Inside pocket. Loop closure with hand-made African bead "button". 6.25" handle drop. 13.75"H x 20.5"W x 7"D. 100% cotton.

Flour Sack: 30408010



Globe Trotter

Two layers of recycled flour sacks. Top zip. Inside pocket. 22.5" handle drop. 13"H x 17.5"W x 6.5"D. 100% cotton.

Flour Sack: 30308080





Braided

Necklaces ~22"

Bracelets ~7.5"

Earrings ~2.5"

Necklace, Bracelet, Earrings

Papaya:

40044000, 40144000, 40244000

Silver:

40044020, 40144020, 40244020

Teal:

40044010, 40144010, 40244010



Abacus

Necklaces ~25"

Bracelets ~7.5"

Earrings ~2"

Necklace, Bracelet, Earrings

Blueberry:

40042330, 40142330, 40242330

Papaya:

40042340, 40142340, 40242340

Silver:

40042320, 40142320, 40242320

Shamrock:

40042350, 40142350, 40242350



Sankofa

Statement Necklaces ~21"

Bracelets ~7.5"

Earrings ~2.5"

Necklace, Bracelet, Earrings

Shamrock:

40041740, 40141740, 40241740

Poppy:

40041730, 40141630, 40241630

Mustard:

40041710, 40141610, 40241610

Blueberry:

40041750, 40141750, 40241750

Rainbow:

40041760, 40141760, 40241760

Teal:

40041700, 40141600, 40241600



Sankofa
is a traditional
Adinkra symbol
used in West Africa
to represent the
importance of
learning from the
past and embracing
one's roots.



Safari

Necklaces ~20"

Bracelets ~7.5"

Earrings ~2.25"

Necklace, Bracelet, Earrings

Blueberry:

40040810, 40140810, 40240810

Papaya:

40040820, 40140820, 40240820



Heart Pendant

Necklace ~20": 40042900



Festival

Necklace ~18": 40040900

Bracelet ~7.5": 40140900

Earrings ~1.5": 40240900



Glass Rainbow

Necklace ~18": 40040400

Bracelet ~7.5": 40140400

Earrings ~2": 40240400



6-Strand

Necklace ~18": 40040010

Bracelet ~7.5": 40140010

Earrings ~2": 40240010



Elliptical Rainbow

Necklace ~20": 40040200

Bracelet ~7.5": 40140200

Earrings ~2.25": 40240200



Chunky

Bracelets ~7.5"

Earrings ~1"

Bracelet, Earrings

Rainbow:

40140520, 40240520

Coral:

40140510, 40240510





Pencil Skirt on pg. 15

Orbit

Necklaces ~25"

Bracelets ~7.5"

Earrings ~2.25"

Necklace, Bracelet, Earrings

Pink:

40044200, 40144200, 40244200

Teal:

40044210, 40144210, 40244210



Glass Pearls

Necklaces ~18"

Bracelets ~7.5"

Earrings ~2"

Necklace, Bracelet, Earrings

Teal:

40040150, 40140150, 40240150

Pink:

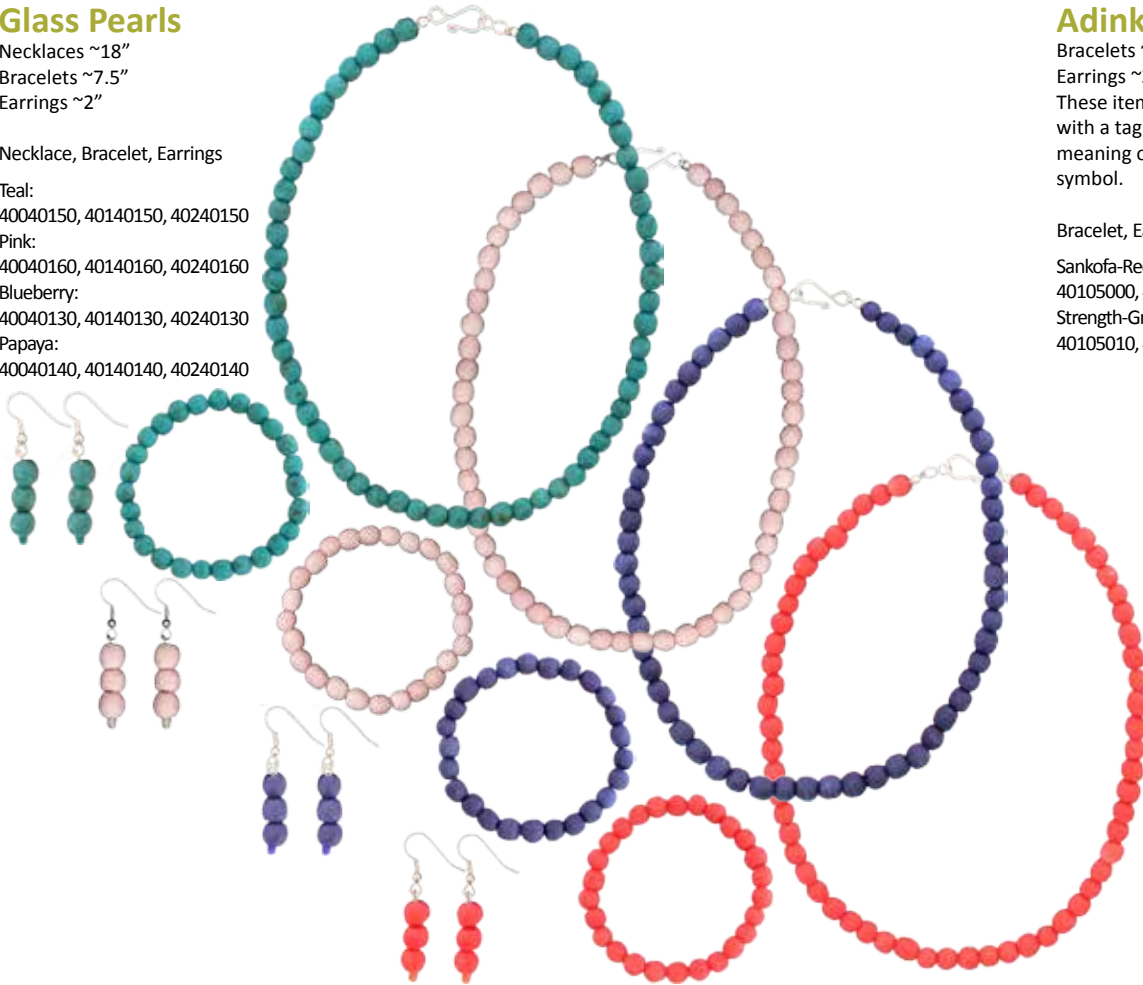
40040160, 40140160, 40240160

Blueberry:

40040130, 40140130, 40240130

Papaya:

40040140, 40140140, 40240140



Adinkra

Bracelets ~7.5"

Earrings ~2"

These items will come with a tag explaining the meaning of the Adinkra symbol.

Bracelet, Earrings

Sankofa-Red:

40105000, 40205000

Strength-Green:

40105010, 40205010



Catch of the Day

Necklaces ~20"

Bracelets ~7.5"

Earrings ~1.5"-2.25"

Necklace, Bracelet, Earrings

Coins:

40040320, 40140320, 40240320

Pearls:

40040300, 40140300, 40240300

Treasure:

40040310, 40140310, 40240310



Chandelier

Necklace ~23" top strand,
~25" bottom strand: 40042000

Bracelet ~7.5": 40142000

Earrings ~2.5": 40242000



Glass Pearls

Necklaces ~18"

Bracelets ~7.5"

Earrings ~2"-2.25"

Necklace, Bracelet, Earrings

Blue:

40040100, 40140100, 40240100

Moss:

40040110, 40140110, 40240110

Rainbow:

40040120, 40140120, 40240120



Ashanti

Necklaces ~19"
Bracelets ~7.5"
Earrings ~1.75"

Necklace, Bracelet, Earrings

Teal:

40042700, 40142700, 40242700

Poppy:

40042710, 40142710, 40242710



Korli

“Korli” means beautiful
in the Krobo dialect,
spoken in the region where
the beads are made.

Korli

Necklace ~20"
Bracelet ~7.5"
Earrings ~2"

Necklace, Bracelet, Earrings

Black:

40044400, 40144400, 40244400



Safari Brown

Necklace ~21": 40040800
Bracelet ~7.5": 40140800
Earrings ~2.25": 40240800



Marble

Necklaces ~19"

Bracelets ~7.5"

Earrings ~1.75"

Necklace, Bracelet, Earrings

Teal:

40043040, 40143040, 40243040

Poppy:

40043030, 40143030, 40243030

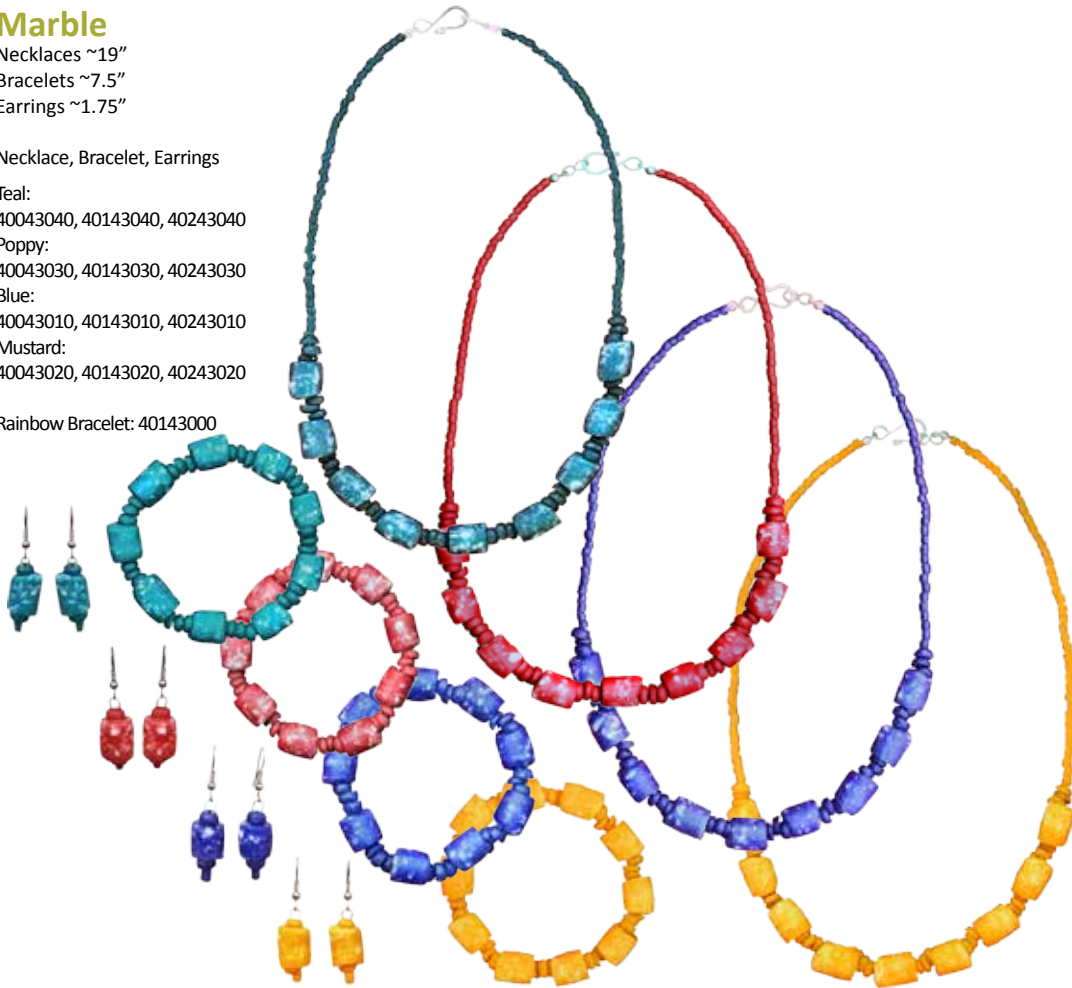
Blue:

40043010, 40143010, 40243010

Mustard:

40043020, 40143020, 40243020

Rainbow Bracelet: 40143000



Jewelry

Global Mamas' beads are handmade in Ghana from recycled glass. Everything from the collection of the bottles to the stringing of the beads takes place in Ghana. Findings are silver plated or sterling silver. Ear wires are surgical steel.





Fair Trade Story Bracelet

Mix of bauxite and recycled glass beads.
Elastic Bands ~7.5" x 3
40101200

Story Bracelets

These best-selling bracelets come with a tag describing the unique meaning of the beads.



Eco Bracelet

Mix of bauxite and recycled glass beads.
Elastic Band ~7.5"
40101050



3 interconnected bracelets in 1

Fair Trade

This bracelet represents the power of Fair Trade, which at Global Mamas results in Prosperity for African Women & their Families while ensuring a clean and Healthy Environment for future generations.

Eco

Each bead represents the interdependence of all facets of our world: earth, oceans, rainforests, atmosphere, wildlife, people, fair trade, and peace.



Sister Bracelet

Mix of bauxite and recycled glass beads.
Elastic Band ~7.5"
40101000



Sister Prosperity

Earrings ~1.75"
40201020



Sister United

Earrings ~2"
40201000



Tree of Life Bracelet

Mix of bauxite and recycled glass beads.
Elastic Band ~7.5"
40101100



Sister New Day

Earrings ~1.5"
40201030



Sister Transformation

Earrings ~2"
40201010

Sister to Sister
"Hand in Hand
we create a global
community of SISTERS UNITED
together to TRANSFORM
and PROSPER
creating a NEW DAY."

Tree of Life
"Reach for the SKY
while remaining grounded
by your ROOTS, if in the
process you lose some LEAVES,
remember you will grow new
ones with the beauty and
bounty of WISDOM."



Hodge Podge Spiral

3 coils of memory wire ~23":
40140860



6-Strand Rainbow

Elastic Band ~7.5": 40140010
Full Set: pg. 33



Glass Rainbow

Elastic Band ~7.5": 40140400
Full Set: pg. 33



Hodge Podge Single

Elastic Band ~7.5": 40140850



Elliptical Rainbow

Elastic Band ~7.5": Rainbow: 40140200
Full Set: pg. 33



Marble Rainbow

Elastic Band ~7.5": 40140300
Full Set: pg. 33



Sankofa

Elastic Band ~7.5"

Mustard: 40141610

Poppy: 40141630

Shamrock: 40141740

Full Set: pg. 30-31



Sankofa

Elastic Band ~7.5"

Teal: 40141600

Rainbow: 40141760

Blueberry: 40141750

Full Set: pg. 30-31



Marble

Elastic Band ~7.5"

Poppy: 40143030

Blue: 40143010

Teal: 40143040

Mustard: 40143020

Full Sets: pg. 39



Elliptical Green

Elastic Band ~7.5": 40140220



Korli

Elastic Band ~7.5": 40144400

Full Set: pg. 38



Gladys

Elastic Band ~7.5": 40142500



Safari Brown

Elastic Band ~7.5": 40140800

Full Set: pg. 38



Kakum

Elastic Band ~7.5": 40141500



Chandelier

Elastic Band ~7.5": 40142000

Full Set: pg. 36



Glass Pearls

Elastic Band ~7.5"
Moss: 40140110
Rainbow: 40140120
Blue: 40140100
Full Set: pg. 37



Catch of the Day

Hemp Cording ~7.5"
Coins: 40140320
Pearls: 40140300
Treasure: 40140310
Full Set: pg. 36



Safari

Elastic Band ~7.5"
Papaya: 40140820
Blueberry: 40140810
Full Set: pg. 32



Orbit

Elastic Band ~7.5"
Teal: 40144210
Pink: 40144200
Full Set: pg. 34



Adinkra

Elastic Band ~7.5"
Sankofa: 40105000
Strength: 40205010
Full Set: pg. 35



Ashanti

Elastic Band ~7.5"
Teal: 40142700
Poppy: 40142710
Full Set: pg. 38



Braided

Elastic Band ~7.5"

Teal: 40144010

Silver: 40144020

Papaya: 40144000

Full Set: pg. 28



Glass Pearls

Elastic Band ~7.5"

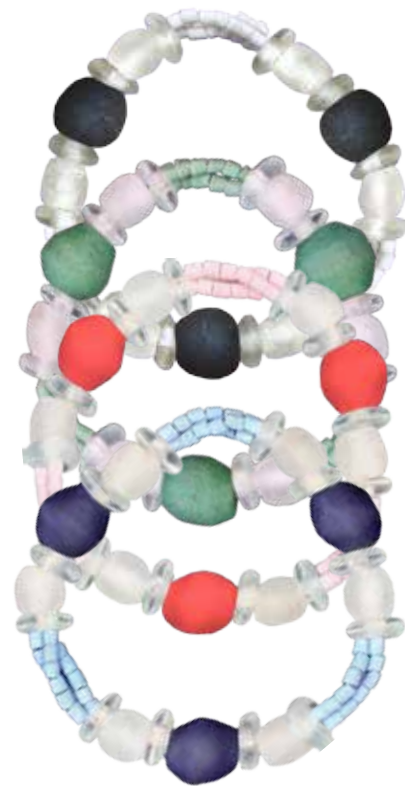
Papaya: 40140140

Blueberry: 40140130

Pink: 40140160

Teal: 40140150

Full Set: pg. 35



Abacus

Elastic Band ~7.5"

Silver: 40142320

Shamrock: 40142350

Papaya: 40142340

Blueberry: 40142330

Full Set: pg. 29



Azteca Teal

Elastic Band ~7.5": 40142110



Festival

Elastic Band ~7.5": 40140900
Full Set: pg. 32



Stones Blue

Elastic Band ~7.5": 40143210



Azteca Mustard

Elastic Band ~7.5": 40142100



Stones Rainbow

Elastic Band ~7.5": 40143200



Pebbles

Elastic Band ~7.5"
Poppy: 40143140
Teal: 40143150
Rainbow: 40143100



Pebbles

Elastic Band ~7.5"
Lime: 40143120
Mustard: 40143130
Blue: 40143110



Pebbles

Earrings ~2.25"
Teal: 40243150
Lime: 40243120
Poppy: 40243140
Rainbow: 40243100



**Sankofa
Poppy**

Earrings ~2.5"

40241630

Full Set: pg. 30-31

**Sankofa
Shamrock**

Earrings ~2.5"

40241740

Full Set: pg. 30-31

**Sankofa
Rainbow**

Earrings ~2.5"

40241760

Full Set: pg. 30-31

**Sankofa
Blueberry**

Earrings ~2.5"

40241750

Full Set: pg. 30-31

**Sankofa
Mustard**

Earrings ~2.5"

40241610

Full Set: pg. 30-31

**Sankofa
Teal**

Earrings ~2.5"

40241600

Full Set: pg. 30-31



**Braided
Teal**

Earrings ~2.5"

40244010

Full Set: pg. 28

**Braided
Papaya**

Earrings ~2.5"

40244000

Full Set: pg. 28

**Braided
Silver**

Earrings ~2.5"

40244020

Full Set: pg. 28



**Catch of the Day
Pearls**

Earrings ~2.25"

40240300

Full Set: pg. 36

**Elliptical
Rainbow**

Earrings ~2.25"

40240200

Full Set: pg. 33



**Abacus
Papaya**

Earrings ~2"
40242340
Full Set: pg. 29



**Abacus
Shamrock**

Earrings ~2"
40242350
Full Set: pg. 29



**Abacus
Silver**

Earrings ~2"
40242320
Full Set: pg. 29



**Abacus
Blueberry**

Earrings ~2"
40242330
Full Set: pg. 29



**Orbit
Pink**

Earrings ~2"
40244200
Full Set: pg. 34



**Orbit
Teal**

Earrings ~2"
40244210
Full Set: pg. 34



**Glass Pearls
Teal**

Earrings ~2"
40240150
Full Set: pg. 35



**Glass Pearls
Pink**

Earrings ~2"
40240160
Full Set: pg. 35



**Glass Pearls
Blueberry**

Earrings ~2"
40240130
Full Set: pg. 35



**Glass Pearls
Papaya**

Earrings ~2"
40240140
Full Set: pg. 35



**Safari
Blueberry**

Earrings ~2"
40240810
Full Set: pg. 32



**Safari
Papaya**

Earrings ~2"
40240820
Full Set: pg. 32



**Glass Pearls
Blue**

Earrings ~2"
40240100
Full Set: pg. 37



**Glass Pearls
Rainbow**

Earrings ~2.5"
40240120
Full Set: pg. 37



**Glass Pearls
Moss**

Earrings ~2"
40240110
Full Set: pg. 37



**Chunky
Rainbow**

Earrings ~1.5"
40240520
Full Set: pg. 33



Glass Rainbow

Earrings ~2"
40240400
Full Set: pg. 33



6-Strand

Earrings ~2"
40240010
Full Set: pg. 33



Festival

Earrings ~1.5"
40240900
Full Set: pg. 32



Chandelier

Earrings ~2.5"
40242000
Full Set: pg. 36



**Safari
Brown**

Earrings ~2.25"
40240800
Full Set: pg. 38



**Chunky
Coral**

Earrings ~1.5"
40240510
Full Set: pg. 33



**Catch of the Day
Coins**

Earrings ~1.75"
40240320
Full Set: pg. 36



Spiral

Earrings ~2.75"
Rainbow: 40243200



Ashanti Teal

Earrings ~1.75"
40242700
Full Set: pg. 38



Ashanti Poppy

Earrings ~1.75"
40242710
Full Set: pg. 38



Marble Teal

Earrings ~1.75"
40243040
Full Set: pg. 39



Adinkra Strength

Earrings ~2"
40205010
Full Set: pg. 35



Adinkra Sankofa

Earrings ~2"
40205000
Full Set: pg. 35



Korli Black

Earrings ~2"
40244400
Full Set: pg. 38



Eli Dress on pg. 11
Glass Pearls set on pg. 35

Reversible Apron

Front pocket. Neck strap.
Tie at back waist. Recycled flour sack backing. 100% cotton.

- Sunflower-Red: 45010041
- Box Turtle-Lime: 45010031
- Fishy Turtles-Aqua: 45010151
- Diamonds-Khaki: 45010191
- Elephants-Blueberry: 45010141
- Citrus-Papaya: 45010181
- Jungle-Green: 45010171
- Leaves-Slate: 45010201
- Pineapple-Marigold: 45010211
- Silverware-Blue: 45010071



Apron

Front pocket. Neck strap.
Tie at back waist. 100% cotton.

- Grapevine-Teal: 45000141
- Coffee Cups-Brown: 45000111
- Citrus-Shamrock: 45000121
- Cupcake-Papaya: 45000131
- Hanging Ferns-Blue: 45000151



Reversible Apron:
Flour Sack Back

Pot Holder

Loop for hanging. Quilted with heat resistant cloth and foam. 8.5" x 8.5". 100% cotton shell.

Grapevine-Teal: 45050300
Coffee Cups-Brown: 45050020
Citrus-Shamrock: 45050270
Cupcake-Papaya: 45050280
Hanging Ferns-Blue: 45050090
Sunflower-Red: 45050070
Box Turtle-Lime: 45050060
Fishy Turtles-Aqua: 45050240
Diamonds-Khaki: 45050290
Elephants-Blueberry: 45050230
Citrus-Papaya: 45050260
Jungle-Green: 45050250
Leaves-Slate: 45050310
Pineapple-Marigold: 45050320
Silverware-Blue: 45050100



Gardening Apron

Front pockets and holding loops. Tie at back waist. Recycled flour sack backing. 100% cotton.

Sunflower-Red: 45021041
Ivy-Shamrock: 45021061
Jungle-Blueberry: 45021071



Gardening Apron: Flour Sack Back

Kids' Apron

Front pocket. Neck strap. Tie at back waist. 100% cotton.

Fishy Turtles-Aqua: 45030081
Pineapple-Marigold: 45030121
Elephants-Blueberry: 45030071
Hearts-Purple: 45030111
Cupcake-Papaya: 45030101
Robots-Teal: 45030131



Napkin

Sold in sets of four.
16" x 16". 100% cotton.

Sunflower-Red: 45120020
Fisheye-Olive: 45120080
Giant Flower-Blueberry: 45120230
Diamonds-Blueberry: 45120210
Paisley-Green: 45120260
Diamonds-Khaki: 45120220
Jungle-Papaya: 45120240
Small Fisheye-Marigold: 45120270
Leaves-Slate: 45120250
Silverware-Blue: 45120180
Citrus-Papaya: 45120200
Jungle-Green: 45120170



Reversible Placemat

Topstitching around edges.
14.5" W x 18.5"L. 100% cotton.

Sunflower-Red/Olive:
45110070
Paisley-Green/Khaki:
45110130
Giant Flower-Blueberry:
45110100
Jungle-Papaya/Marigold:
45110110
Leaves-Slate/Light Blue:
45110120



Tablecloth

Border sewn on long edge.
58"W x 84"L. 100% cotton.

Sunflower-Red: 45100020
Giant Flower-Blueberry: 45100120
Paisley-Green: 45100140
Citrus-Papaya: 45100110
Leaves-Slate: 45100130
Jungle-Green: 45100090



Button Basket

Four sides fold up and button together. Reinforced to hold shape. Stores flat. 7.5"W x 7.5"W x 4"H. 100% cotton shell.

Sunflower-Red: 45320130
Silverware-Blue: 45320220
Fisheye-Olive: 45320050
Diamonds-Lavender: 45320160
Leaves-Slate: 45320200
Diamonds-Teal: 45320170
Pineapple-Marigold: 45320210
Jungle-Green: 45320120
Giant Flower-Blueberry: 45320180
Citrus-Papaya: 45320150
Grapevine-Teal: 45320190



Velcro Basket

Four sides fold up and velcro together. Reinforced to hold shape. Stores flat. 7"W x 7"W x 2.5"H. 100% cotton shell.

Sunflower-Red: 45310020
Box Turtle-Blue: 45310090
Paisley-Green: 45310280
Jungle-Papaya: 45310270
Hydrangea-Slate: 45310190
Giant Flower-Teal: 45310240
Pineapple-Marigold: 45310290
Diamonds-Khaki: 45310230
Jungle-Blueberry: 45310260
Roses-Papaya: 45310300
Diamonds-Blueberry: 45310220



Recycled Woven Trivet

Woven from recycled batik scraps. Each one is unique. 8" x 8". 100% cotton.

Blue: 45150030
Green: 45150070
Silver/Black: 45150110
Papaya: 45150100
Aqua: 45150050



Coasters

Set of four. Packaged with raffia tie. Reversible. Reinforced for stability. 4" x 4". 100% cotton shell.

Sunflower-Red: 45140130
Paisley-Green: 45140170
Leaves-Slate: 45140160
Jungle-Papaya: 45140150
Jungle-Green: 45140120
Jungle-Blueberry: 45140140



Stackable Bins

Set of three. Reinforced to hold shape.

Large: 9"H x 8.5"D

Medium: 7"H x 7.75"D

Small: 5"H x 7"D

100% cotton shell.

Robots-Teal:

45330190

Giant Flower-Primrose:

45330150

Paisley-Green/Khaki:

45330180

Leaves-Slate/Light Blue:

45330170

Jungle-Papaya/Marigold:

45330160

Jungle-Green/Olive:

45330120

Jungle-Flower-Blueberry:

45330140

Sunflower-Red/Olive:

45330130



Batik Throw

Front patchwork of batik fabric scraps. Back patchwork of recycled flour sacks. Each one is unique. 50"W x 60"L. 100% cotton.

Patchwork Batik: 45220010



Reusable Gift Bag

Drawstring top.
Small: 5"H x 3.5"W.
Large: 7"H x 5"W.
100% cotton.

Small: 30600000
Large: 30601000



Laundry Bag

Made from overstock fabric in assorted prints. Each one is unique. Drawstring closure. 30"H x 20"W. Recycled flour sack lining. 100% cotton.

Assorted-Papaya: 45341030
Assorted-Blueberry: 45341010
Assorted-Marigold: 45341020
Assorted-Shamrock: 45341050
Assorted-Primrose: 45341040



Wine Bag

Drawstring at bottle neck.
100% cotton.

Assorted: 30602000



Laundry Bags will be sewn using assorted prints.
These photos only provide an example. Each bag will be unique.

Sister Ornament

Modeled after our best selling bracelet representing sisterhood. Includes tag explaining the meaning of the ornament. Wire framework. Wire hanging loop with raffia tie. ~3.5".

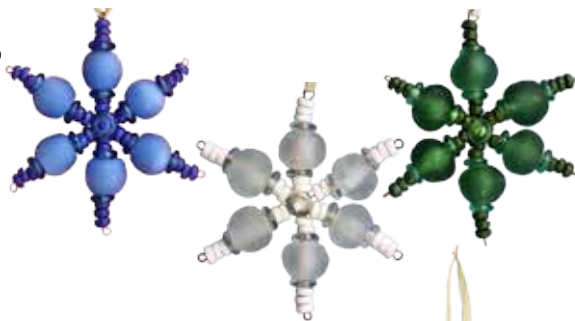
Sister: 50100010



Snowflake

Wire framework. Wire hanging loop with raffia tie (not shown). ~3.5".

Blue: 50201310
White: 50201300
Moss: 50201320



Adinkra Pendant

Painted beads depict Adinkra symbols with specific meanings. Each ornament comes with a tag describing the meaning of the Adinkra symbol. Wire hanging loop with raffia tie (not shown). ~3.5".

Strength Heart-Amber:

50102210

Strength Star-Amber:

50102200

Sankofa Heart-Blue:

50102020

Sankofa Star-Blue:

50102010

Gye Nyame Heart-White:

50102110

Gye Nyame Star-White:

50102100



Beaded

Seed beads and painted beads strung between a wire framework. Wire hanging loop with raffia tie (not shown). ~5-6".

Tree-Rainbow: 50203100

Tree-White: 50203120

Tree-Red: 50203110

Africa-Rainbow: 50103000

Star-Rainbow: 50203000

Star-White: 50203020

Star-Red: 50203010

Angel-Blue: 50203200



Holiday Characters

Wire framework. Wire hanging loop. Raffia tie (not shown).

Snowman (~4" tall): 50200020

Angel (~5" tall): 50200000

Santa (~5" tall): 50200010



Safari

Wire framework. 2" nylon hanging loop (not shown).

Lion (~2" tall): 50300020

Elephant (~2" tall): 50300010

Giraffe (~4" tall): 50300000



Star of Africa

Wire framework. Wire hanging loop with raffia tie (not shown). ~4.25".

Painted-Red: 50202010

Painted-White: 50202020

Painted-Blue: 50202000



Photo Holder

Made with handmade beads from recycled glass. Wire framework. Base ~2"W. ~4" tall.

Sold in sets of 6

Hodge Podge-Multi: 45200040

Nsromma-Blue: 45200050

Painted Stars-White: 45200020

2 of Each-Assorted: 45200010



African Spirit:

Each African Spirit is unique using a variety of recycled glass beads.

A. Lapel Pin

Silver plated pin back.
~5" tall.

Lapel Pin Mama:
40900000

B. Key Ring

Nickel plated split ring.
Made with durable wire.
~5" tall.

Key Ring Mama:
40901000

C/D. Standing

Wire framework. ~5" tall.
Glass star base ~2.5" wide.

Sold in sets of 6.

Standing Mama
Set of 6: 50001000

Standing Mama/Papa Set of 3
each: 50001020

E/F. Hanging

Raffia loop for hanging.
~5" tall.

Hanging Mama:
50000000

Hanging Papa:
50000010

African Spirit

This African Spirit is a good luck charm. As it meant in many early African cultures, raffia combined with other materials was used to denote something good. Raffia is still used today in many traditional African ceremonies to ask the gods to bring good things.

African Spirit Nativity Set

Mary and Joseph ~5.5" tall

Baby Jesus ~3" tall.

Glass star base ~2.5" wide.

Set of 3: 50002000



Pet Bandana

Double layer of batik fabric.
100% cotton.

S/M: 28"L.
Assorted: 60102001
L/XL: 35"L.
Assorted: 60103001



Sudsy Mutt

PET BALM - For application on pet's minor skin irritations, cracked paws or dry spots. Packaged in plastic screw-top container made in Ghana. 2.8oz/80g container.

Ingredients: pure unrefined shea butter, beeswax, essential oils.

SHAMPOO BAR - Shea butter nourishes pet's skin, while herbal oils deodorize and repel insects. Packaged in 100% recycled polyethylene plastic from Ghana. 4.2oz/120g bar.
Ingredients: pure unrefined shea butter, coconut oil, citronella and tea tree oils, sodium hydroxide.

Pet Balm: 55901000
Shampoo Bar: 55900000



Dog Leash

Woven from overstock cotton batik print fabric. Heavy duty steel swivel clasp. 54"L.

Rainbow: 60001010



Dog Tie

Slides over dog collar.
100% cotton.

BOW TIE - 2.5"H x 3.75"W.
1.75" collar loop opening.
Assorted: 60101001

NECK TIE - 7.5"H x 3"W.
2" collar loop opening.
Assorted: 60100001



All Natural, All Ghana

Global Mamas is proud to present a skin care line that is produced in Africa. We go beyond sourcing the raw materials, such as our pure, unrefined shea butter, and actually produce the final skin care product in Ghana, creating more jobs and income where they are needed most.

Bulk Shea Butter

Unrefined, ivory, grade A shea butter. Sold in blocks of 10, 25, 55 pounds.



Slippery Slope Shea Body Butter

Shea butter has natural, therapeutic properties that moisturize and restore the natural beauty of skin. Packaged in plastic screw-top containers made in Ghana.

4.0oz/115g container.

Ingredients: pure unrefined shea butter, essential oils.

Purely natural. No chemicals. No preservatives.

No color additives.



- Lavender: 55100040
- Orange & Ginger: 55100060
- Rosemary Mint: 55100080
- Unscented: 55100030
- Vanilla: 55100050

Dandy Lion Mane Control

Manages frizz and provides deep conditioning to dry hair. Packaged in plastic screw-top containers made in Ghana.

2.8oz/80g container.

Ingredients: pure unrefined shea butter, pure beeswax. Purely natural. No chemicals. No preservatives. No color additives.



Mane Control: 55300000

Trunk Scrub Shea Soap

100% natural and moisturizing shea soap is lightly scented to still reveal the nutty smell of shea butter. Packaged in 100% recycled polyethylene plastic from Ghana.

4.2oz/120g bar.

Ingredients: pure unrefined shea butter, coconut oil, sodium hydroxide, essential oils. Purely natural. No chemicals. No preservatives. No color additives.



- Cocomango: 55200050
- Honey Lemon Oatmeal: 55200020
- Lavender: 55200010
- Noni Lemongrass: 55200060
- Orange & Ginger: 55200030
- Rosemary Mint: 55200070

Dandy Lion African Black Soap

100% natural black soap has been used in Africa for generations. Packaged in 100% recycled polyethylene plastic from Ghana.

4.2oz/120g bar.

Ingredients: pure unrefined shea butter, virgin coconut oil, cocoa pod ashes. Purely natural. No chemicals. No preservatives. No color additives.

Black Soap with Shea Butter: 55201000



Powering Change by Empowering Women

Global Mamas transforms the lives of women in Africa by cultivating sustainable income opportunities through the production and export of unique, high-quality, fair-trade products.

We believe that women gaining financial independence is the most effective way to achieve lasting prosperity for themselves and their families.



Our Fair Trade Practices



- For the past 11 years, nearly 35% of annual revenue was paid in wages to the women in our producer network. Global Mamas ensures women are promptly paid a living wage, enabling them to truly improve their standard of living.
- Global Mamas provides business management and product development training allowing women in the network to grow their businesses through innovative strategies.
- Global Mamas engages producers and encourages dialogue in setting payment rates and organizational policies.
- Global Mamas strives to minimize waste in production. Many products include locally sourced and recycled materials.
- Global Mamas is recognized by the Fair Trade Federation and the World Fair Trade Organization for adhering to fair trade principles.



Love Your Product.

Global Mamas products are handcrafted, making each item slightly unique while maintaining the highest quality. The methods used preserve traditional arts that have been passed down through the generations.



Know Your Producer.

Each item comes with a tag that describes Global Mamas and the women who produce the product. Signage to help you share our story can be downloaded from the Global Mamas website.



Change Her Life.

When presented with economic opportunities, each Global Mama carefully invests her earnings to ensure the advancement of her business, her employees, and her family.



Order Information

To learn more about our products or to place an order, please contact us at:

Global Mamas

Phone: (001) 612-781-0455

Fax: (001) 612-781-0450

Email: wholesale@globalmamas.org

Order online: www.globalmamas.org

Shipping Information

Please allow about 6-8 weeks for delivery. Products may be available for immediate shipment.